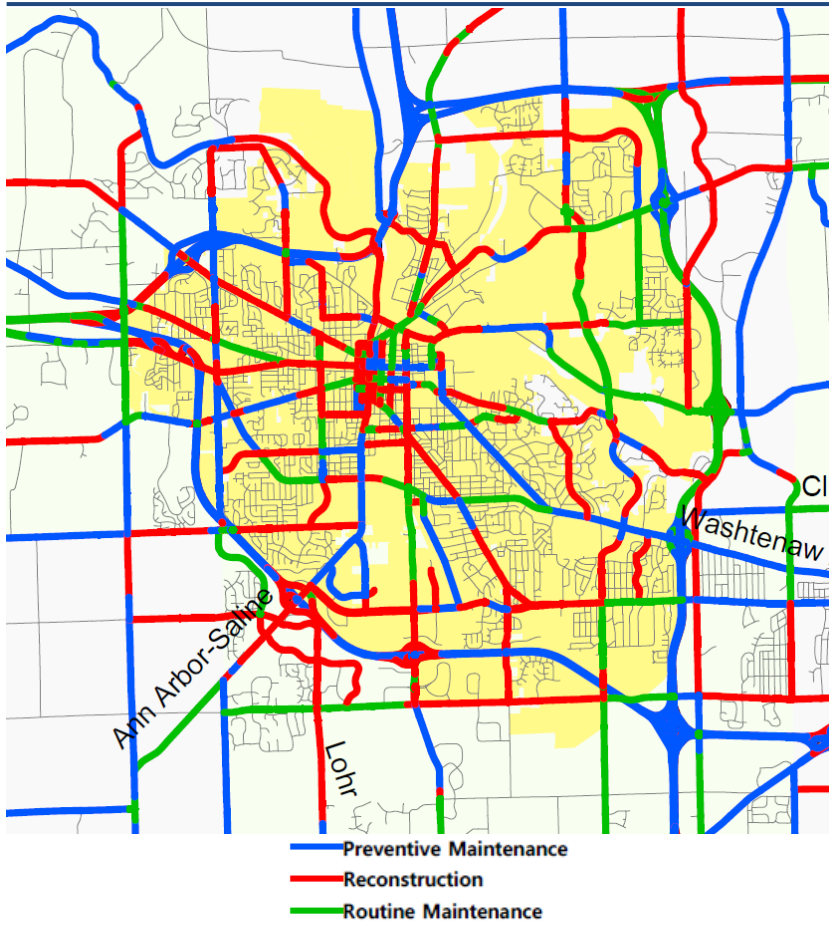
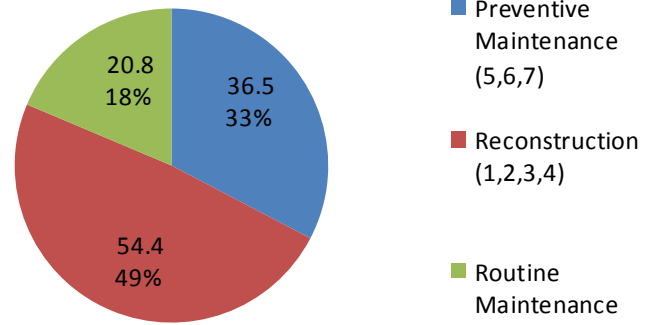


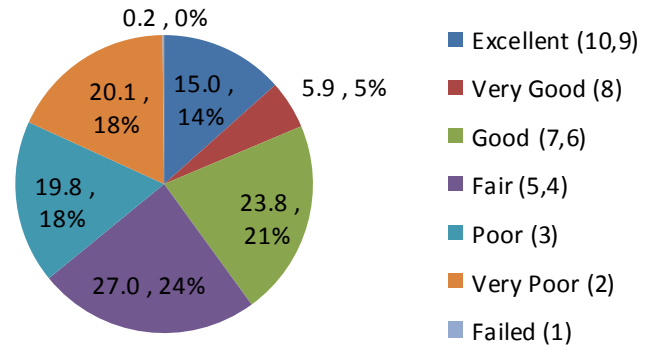
City of Ann Arbor 2012 Asset Management Summary Sheet



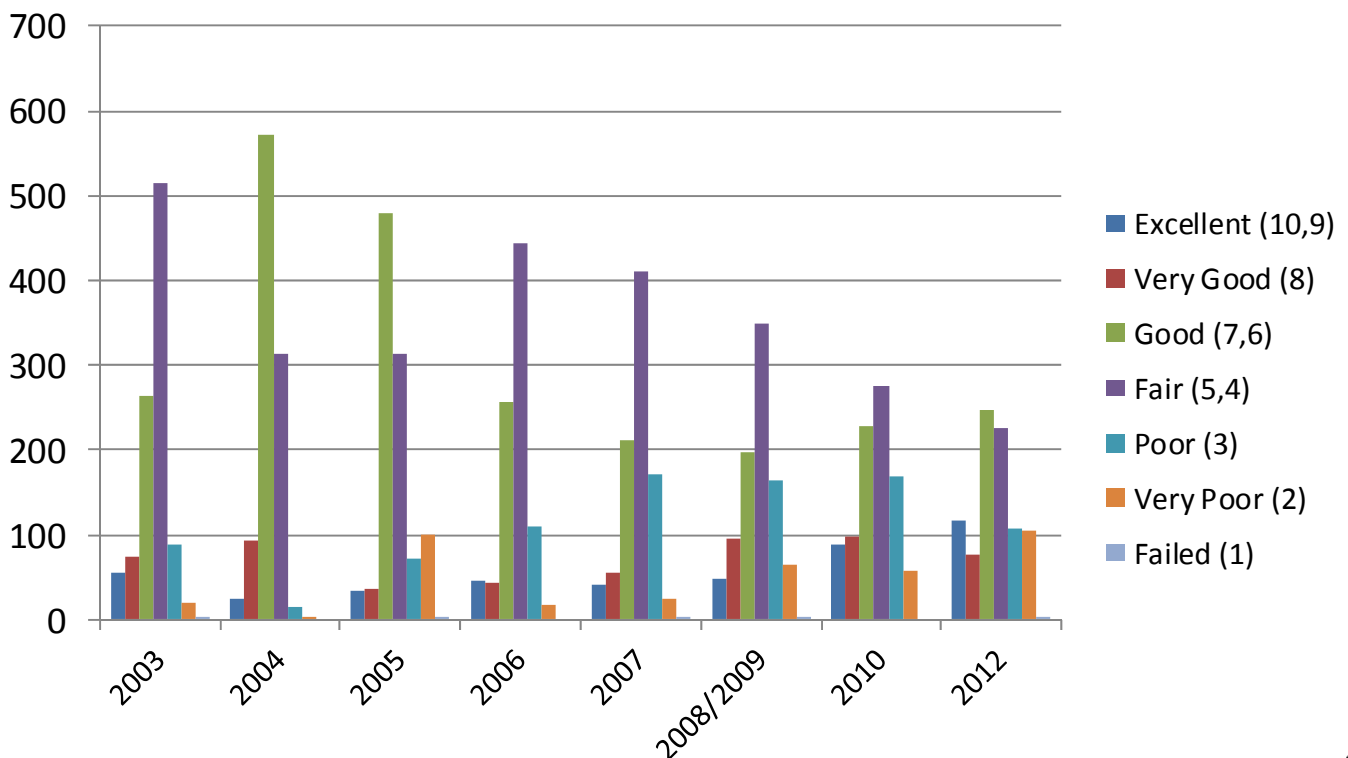
Recommended Action



PASER Rating



Countywide Pavement Condition by Miles



Since 2003, the Washtenaw Transportation Study staff, along with partners from MDOT and the WCRC, have collected data on pavement condition. The Pavement Surface Evaluation and Rating System (PASER) is used to assign a rating from "1" (failed road) to "10" (new road/complete reconstruction).

